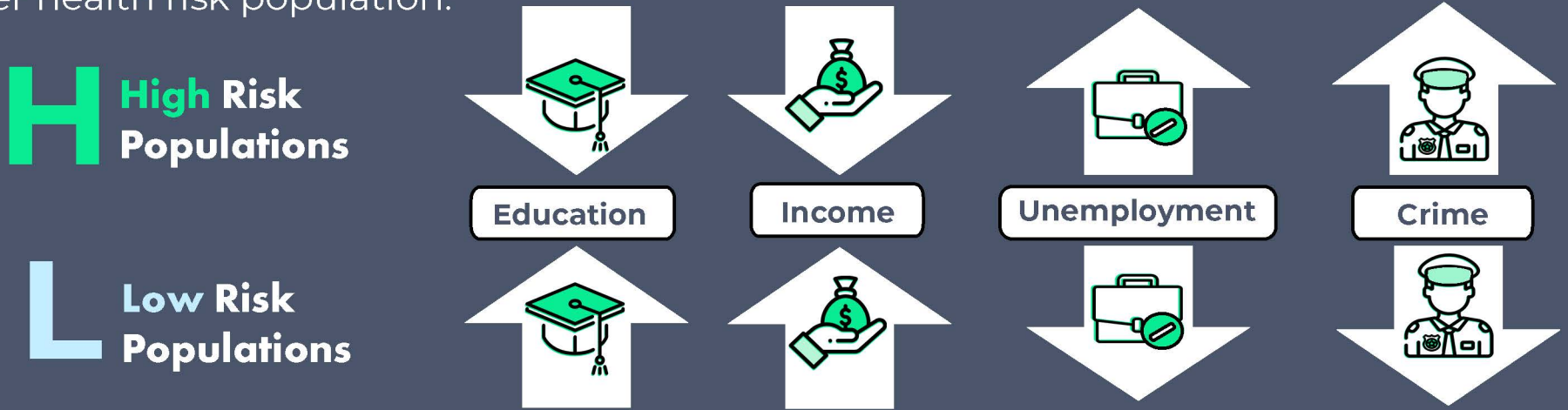


Social Determinants of Health

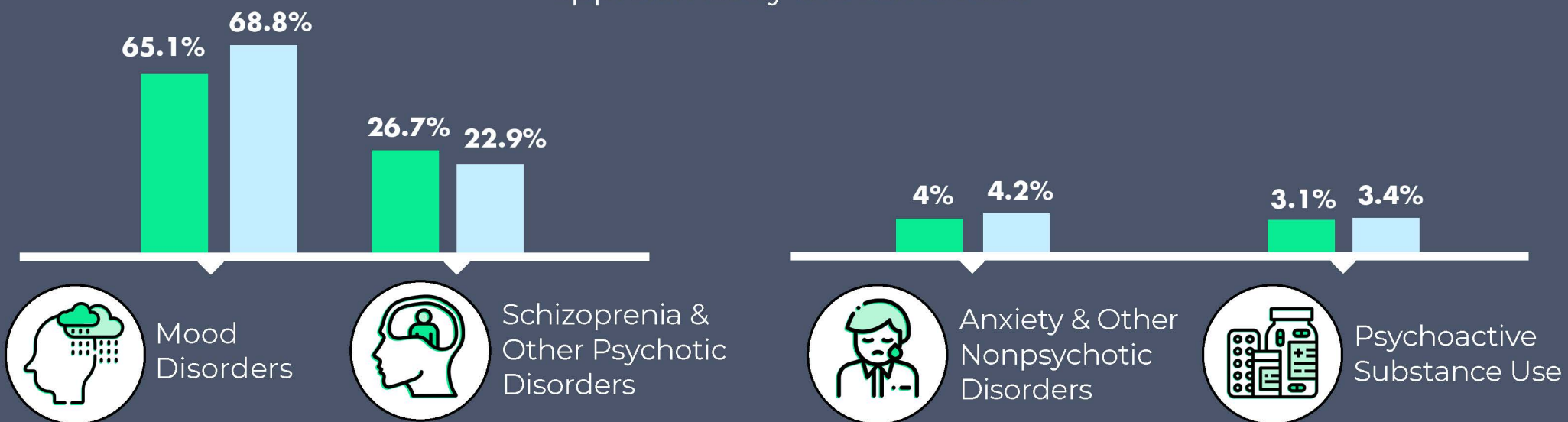
Hospitals may serve patients in very different communities, but the diagnoses and severity of those patients have a lot in common.

Social determinants of health are the conditions in which people are born, grow, live, work and age. Lower education and income along with higher unemployment and crime tend to mean a higher health risk population.



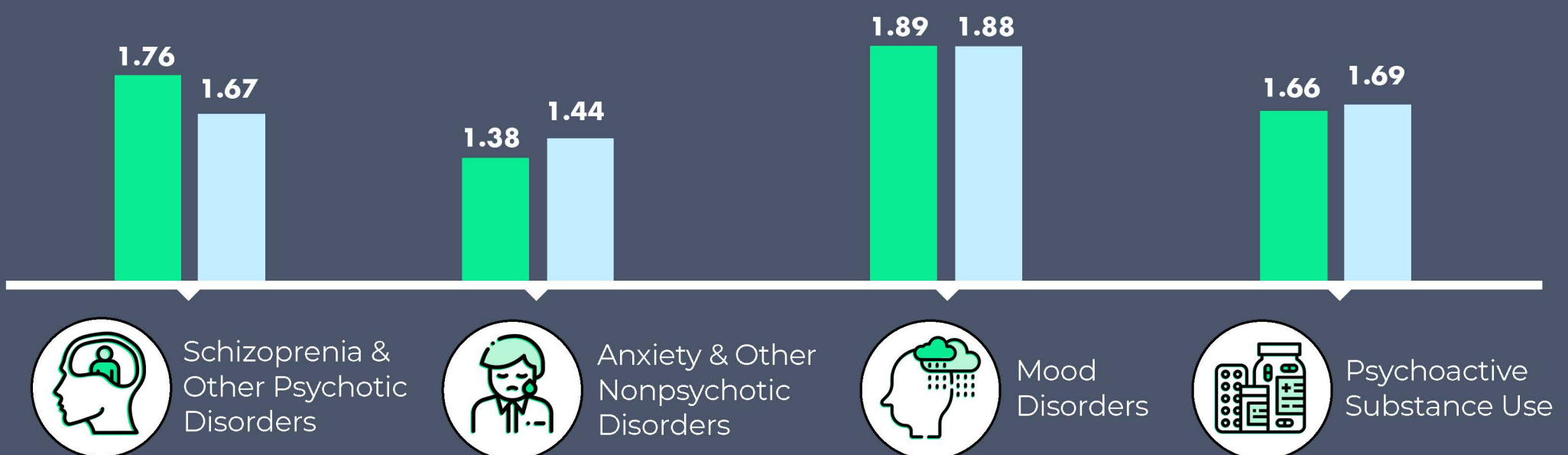
Primary Diagnosis Rates

High risk population hospitals have **slightly more schizophrenia & psychotic disorders** and **slightly fewer mood disorders**. Other diagnoses occur at approximately the same rate.



Admission Severity*

Patients with **schizophrenic and other psychotic disorders** at high risk population hospitals are slightly more severe at admission. **Other diagnoses** have similar admission severity.



Behavioral health hospitals should be prepared to serve all types of patients. Affluence is not a shield from mental health concerns.

Analysis by James Holland

For an opportunity to see your topic discussed here, email your questions to Jessica.Ingram@horizonhealth.com

*The Behavior and Symptom Identification Scale (BASIS-32™) is a self-report measure of a patient's functioning, scored on a scale of 0 to 4 where higher scores indicate greater severity.